

## SUMMARY TEST REPORT

**Contract No.:** P2011375  
**Summary Test Report No.:** STR-400001-SWS1  
**Project Name:** ASTM F2656-07 M50 Testing of 9 ft Wedge, 20 ft Post & Cable, and 170 ft Post & Cable Barriers  
**Sponsor Name:** Smith & Wesson Security Solutions

**DATE:** July 21, 2011

**TO:** Mark R. Morgan  
Smith & Wesson Security Solutions

**FROM:** D. Lance, Bullard, Jr., P.E., Research Engineer, TTI Roadside Safety & Physical Security Division

**PREPARED BY:** Wanda L. Menges, Research Specialist, TTI Proving Ground  
Richard A. Zimmer, Senior Research Specialist, TTI Proving Ground

### FOR MORE INFORMATION:

Name: D. L. Bullard, Jr.  
Phone: 979-845-6153  
E-mail: [l-bullard@tamu.edu](mailto:l-bullard@tamu.edu)

### SUMMARY TEST REPORT:

#### Disclaimer:

This report does not constitute a standard, specification, or regulation. Texas A&M University and Texas Transportation Institute assume no liability for its contents or use thereof. The names of specific products or manufacturers listed herein do not imply endorsement of those products or manufacturers. The results reported herein apply only to the security device being crash tested. The crash test was performed according to ASTM F2656-07 standard specifications and TTI Proving Ground quality procedures.

#### Test Article Design and Construction

Drawings for the Smith & Wesson 9 ft wedge barrier are provided in Attachment A.

#### Assessment and Conclusions

On the morning of July 18, 2011, TTI Proving Ground performed ASTM F2656-07 M50 test on 9 ft wedge barrier designed and manufactured by Smith & Wesson Security Solutions. A 2000 International 4700 single-unit flatbed truck impacted the 9 ft wedge barrier at 90.1 degrees,

*A better job done safer and sooner.*

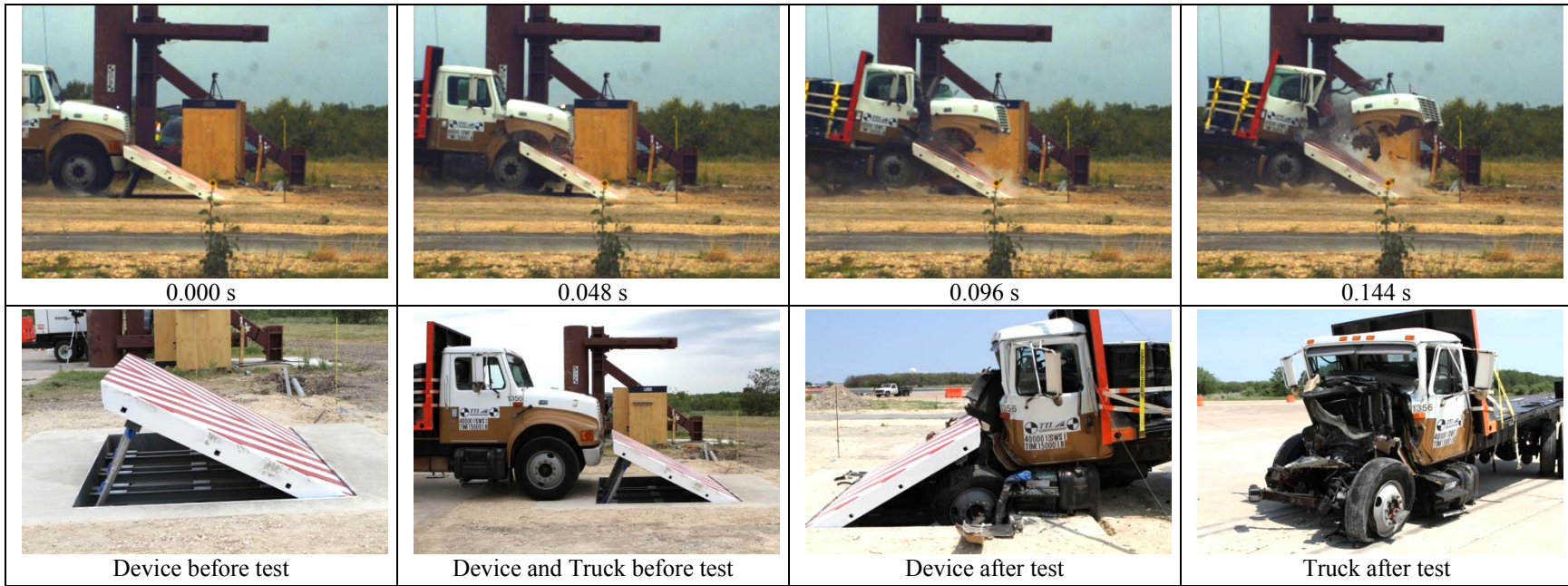


**TTI Proving Ground**  
3100 SH 47, Bldg. 7091  
Bryan, TX 77807

with the centerline of the vehicle aligned with the centerline of the 9 ft wedge barrier. The acceptable range for impact speed for this M50 test was 47.0 mi/h or above, and the actual impact speed was 50.2 mi/h. The 9 ft wedge brought the vehicle to a stop. The cargo remained onboard the vehicle; however, the hood of the vehicle was thrown beyond the inside edge of the 9 ft wedge. The vehicle was disabled. The leading edge of the cargo bed did not penetrate beyond the inside edge of the 9 ft wedge barrier.

*ASTM F2656-07* provides a range of vehicle test designations and penetration levels that allow agencies to select perimeter security devices that satisfy their specific facility needs. The amount of vehicle penetration of the security device at the required impact velocity determines the dynamic penetration rating for each condition designation.

The leading edge of the cargo bed did not penetrate beyond the inside edge of the 9 ft wedge barrier. According to *ASTM F2656-07*, the Smith & Wesson 9 ft wedge barrier meets Condition Designation/Penetration Rating M50/P1, which allows penetration of  $\leq 3.3$  ft when impacted by the medium duty truck at 50 mi/h.



**General Information**

Test Agency..... Texas Transportation Institute (TTI)  
 Test Standard Test No..... ASTM F2656-07 M50  
 Test No. .... TTI 400001-SWS1  
 Date ..... July 18, 2011

**Test Article**

Type..... Security Barrier  
 Name ..... Smith & Wesson 9 ft wedge  
 Installation Dimensions..... 109 inches x 86 inches  
 Material or Key Elements ... Lid assembly and base assembly of plate steel in concrete foundation

**Soil/Foundation Type** ..... Concrete foundation in crushed limestone

**Test Vehicle**

Type.....Medium Duty Truck  
 Designation.....M50  
 Model.....2000 International 4700  
 Mass  
 Curb.....12,090 LB  
 Test Inertial .....15,050 LB

**Impact Conditions**

Speed .....50.2 mi/h  
 Angle .....90.1 degrees

**Exit Conditions**

Speed .....Stopped  
 Angle .....N/A

**Occupant Risk Values**

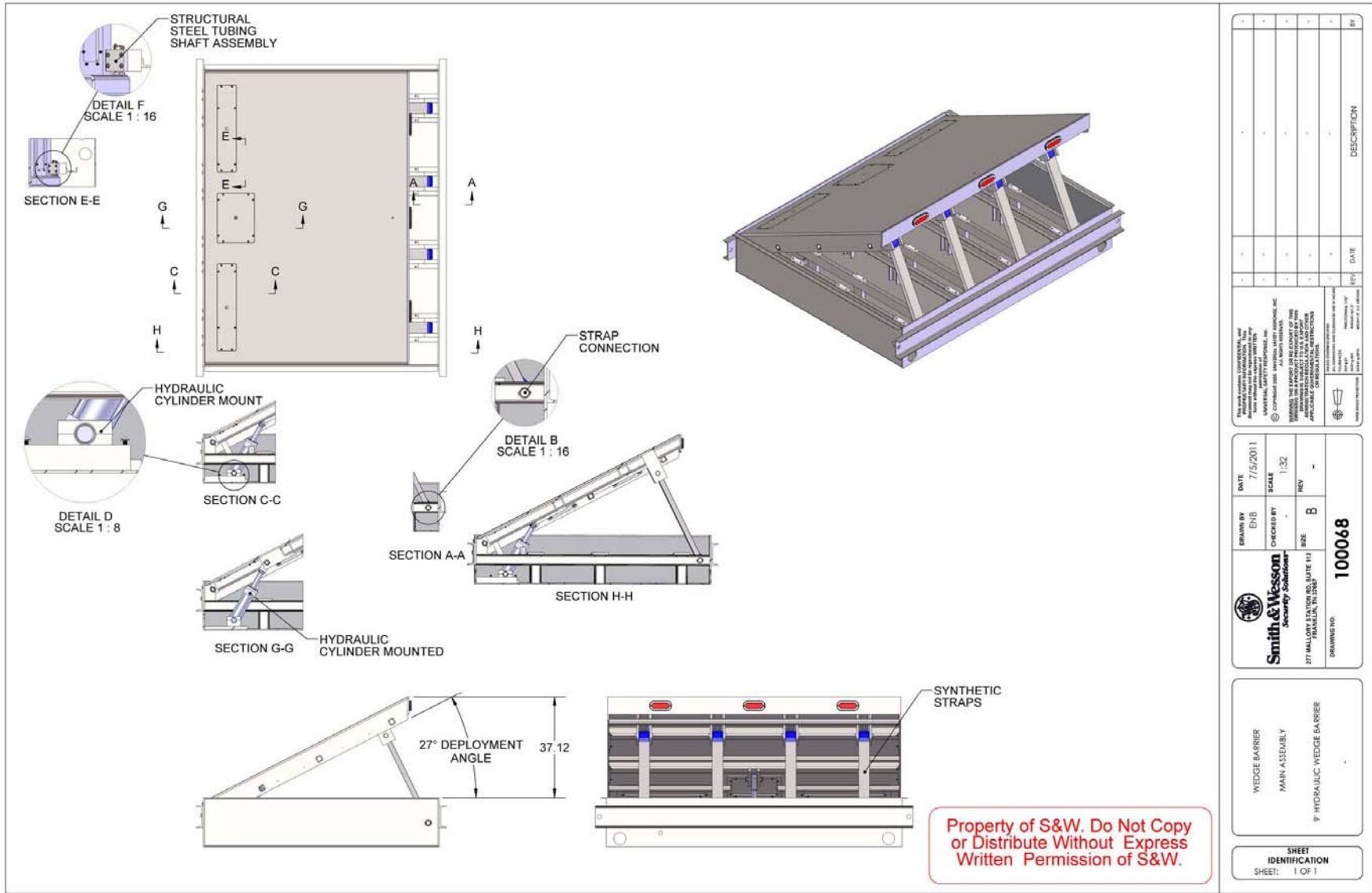
Impact Velocity  
 Longitudinal..... 39.7 ft/s  
 Lateral ..... 10.5 ft/s  
 Ridedown Accelerations  
 Longitudinal ..... 29.6 G  
 Lateral ..... 20.6 G  
 Max. 0.050-s Average  
 Longitudinal ..... -18.6 G  
 Lateral ..... 10.3 G

**Penetration of Cargo Bed**

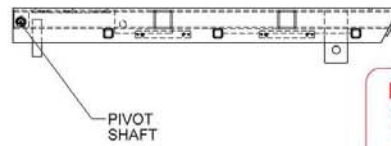
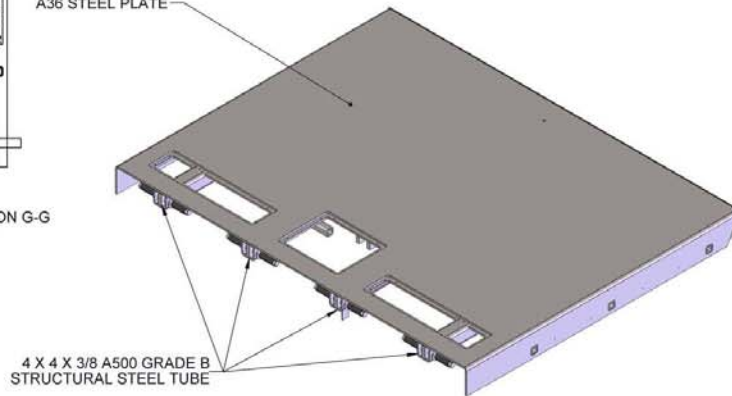
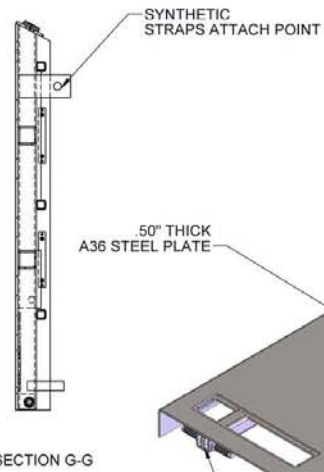
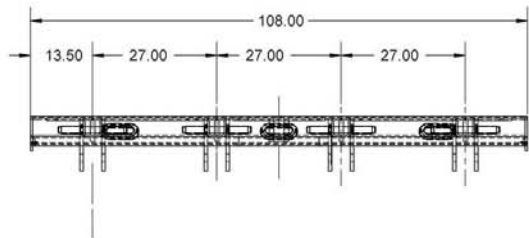
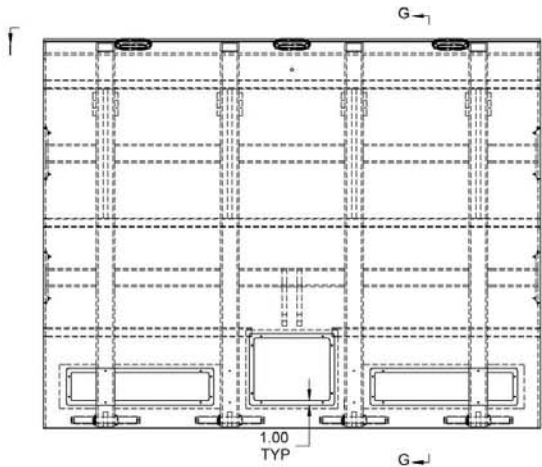
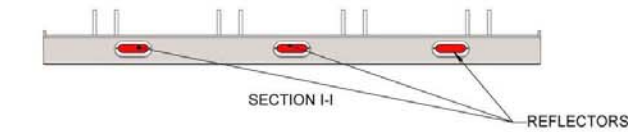
Distance Beyond Inside  
 Edge of Security Device ..... Did not penetrate  
 Truck Disabled? ..... Yes

Summary of results for *ASTM F2656-07 M50* test on the Smith & Wesson 9 ft wedge barrier.


**ATTACHMENT A: DETAILS OF THE SMITH & WESSON  
9 FT WEDGE BARRIER**

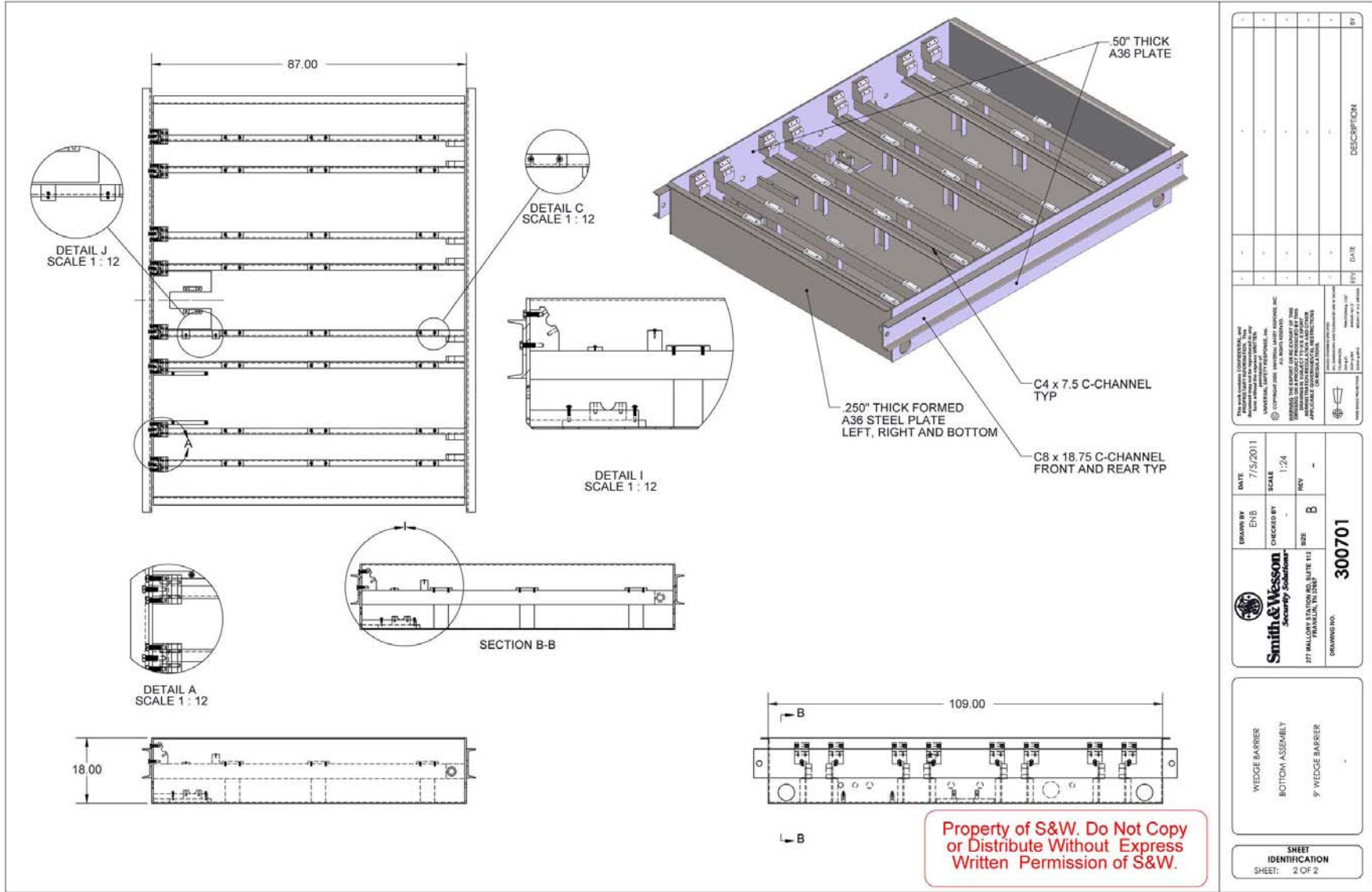


This work is deemed CONFIDENTIAL and proprietary to Smith & Wesson Security Solutions, Inc. It is not to be distributed, copied, or used in any manner without the express written permission of Smith & Wesson Security Solutions, Inc.		DATE	7/5/2011
DRAWN BY EMB	CHECKED BY -	SCALE	1:32
Smith & Wesson Security Solutions 277 MILLCREEK BLVD, SUITE 111 FARMINGTON, TN 37630		REV	B
DRAWING NO. <b>100068</b>		REV	-
WEDGE BARRIER MAIN ASSEMBLY 9' HYDRAULIC WEDGE BARRIER		REV	-
SHEET IDENTIFICATION SHEET: 1 OF 1		DATE	-
		DESCRIPTION	BY

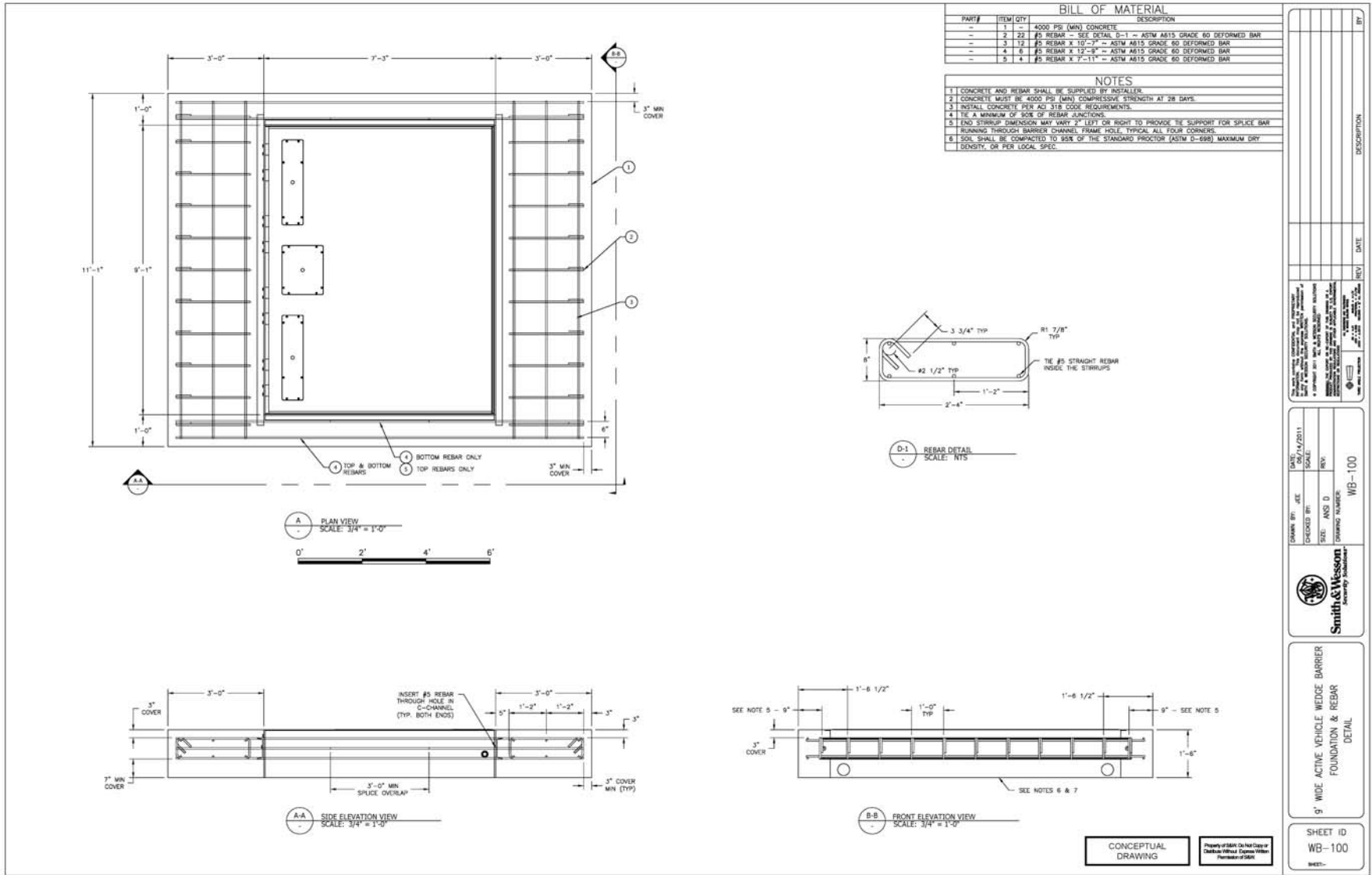


Property of S&W. Do Not Copy  
or Distribute Without Express  
Written Permission of S&W.

<small>THIS DRAWING IS CONFIDENTIAL AND NOT BE LOANED, REPRODUCED, COPIED, EITHER WHOLLY OR IN PART, OR BY ANY MEANS, WITHOUT THE EXPRESS WRITTEN PERMISSION OF SMITH &amp; WESSON SECURITY SOLUTIONS. ANY UNAUTHORIZED USE OF THIS DRAWING IS PROHIBITED. IT IS TO BE USED ONLY FOR THE PROJECT AND LOCATION SPECIFICALLY IDENTIFIED IN THE TITLE BLOCK. THIS DRAWING IS THE PROPERTY OF SMITH &amp; WESSON SECURITY SOLUTIONS. ANY UNAUTHORIZED USE OF THIS DRAWING IS PROHIBITED. IT IS TO BE USED ONLY FOR THE PROJECT AND LOCATION SPECIFICALLY IDENTIFIED IN THE TITLE BLOCK.</small>									
DATE	7/5/2011	SCALE	1:24	REV	-	REV	-	DATE	-
DESIGNED BY	BNS	CHECKED BY	-	SIZE	B				
 <b>Smith &amp; Wesson Security Solutions</b> 277 MILLGROVE DRIVE, SUITE 111 FARMINGTON, NH 03834 DRAWING NO.		<b>300700</b>							
WEDGE BARRIER TOP ASSEMBLY HYDRAULIC WEDGE ASSEMBLY									
SHEET IDENTIFICATION SHEET: 1 OF 1									



THIS DRAWING IS CONFIDENTIAL AND NOT BE LOANED, REPRODUCED, COPIED, REPRODUCED, OR TRANSMITTED IN ANY FORM OR BY ANY MEANS, WITHOUT THE WRITTEN PERMISSION OF S&W.		DATE	7/5/2011
© COPYRIGHT 2008, SMITH & WESSON SECURITY SOLUTIONS, INC. ALL RIGHTS RESERVED.		SCALE	1:24
WEDGES ARE THE PROPERTY OF S&W. THEY ARE NOT TO BE REPRODUCED OR USED IN ANY MANNER WITHOUT THE WRITTEN PERMISSION OF S&W.		CHECKED BY	B
APPLICABLE CONFIDENTIALITY INSTRUCTIONS:		SIZE	B
DRAWING NO. <b>300701</b>		DATE	
DRAWING TITLE: WEDGE BARRIER BOTTOM ASSEMBLY		REV	
SHEET IDENTIFICATION SHEET: 2 OF 2		DESCRIPTION	



REV	DATE	DESCRIPTION

DATE: 11/14/2011  
SCALE: NYS  
REV:  

DRAWN BY: SEE  
CHECKED BY: ANS D  
SIZE: ANS D  
DRAWING NUMBER: WB-100

**Smith & Wesson**  
Security Solutions

9' WIDE ACTIVE VEHICLE WEDGE BARRIER FOUNDATION & REBAR DETAIL

SHEET ID: WB-100

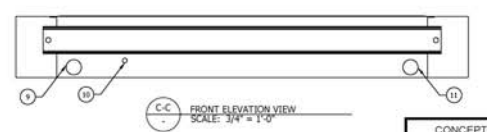
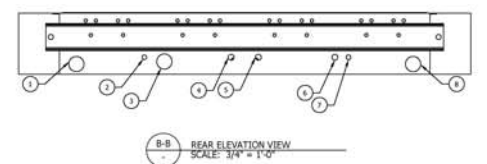
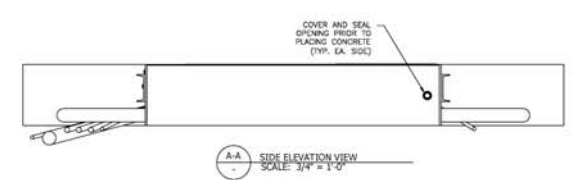
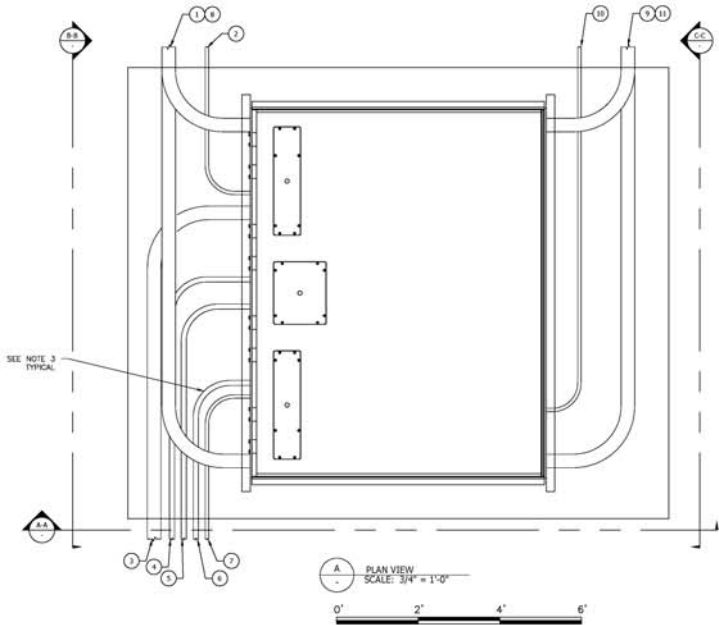
DATE:



UTILITY OUTLET INDEX				
OUTLET	OUTLET DIAMETER	DESCRIPTION	MODEL	REQUIREMENT
1	4.5"	GRAVITY DRAIN	HYDRAULIC/ELECTRIC	OPTIONAL
2	1.38"	WATER PUMP - OPTION 1	HYDRAULIC/ELECTRIC	OPTIONAL
3	4.5"	HYDRAULIC HOSES	HYDRAULIC ONLY	REQUIRED FOR THIS MODEL
4	1.73"	ACTUATOR - COMMUNICATIONS	ELECTRIC ONLY	REQUIRED FOR THIS MODEL
5	1.73"	ACTUATOR - HIGH VOLT.	ELECTRIC ONLY	REQUIRED FOR THIS MODEL
6	1.73"	HIGH VOLTAGE IN	HYDRAULIC/ELECTRIC	REQUIRED ALL MODELS
7	1.38"	LOW VOLTAGE IN	HYDRAULIC/ELECTRIC	REQUIRED ALL MODELS
8	4.5"	GRAVITY DRAIN	HYDRAULIC/ELECTRIC	OPTIONAL
9	4.5"	GRAVITY DRAIN	HYDRAULIC/ELECTRIC	OPTIONAL
10	1.38"	SUMP PUMP - FRONT OPTION	HYDRAULIC/ELECTRIC	OPTIONAL
11	4.5"	GRAVITY DRAIN	HYDRAULIC/ELECTRIC	OPTIONAL

NOTE: EACH OPTIONAL ITEM IS DETERMINED IF REQUIRED BY SITE SPECIFIC CONDITIONS.

- NOTES**
- 1 CONDUIT SHALL BE SUPPLIED BY INSTALLER.
  - 2 CONDUIT SHALL BE INSTALLED PER PROJECT SPEC'S & NEG. LATEST EDITION.
  - 3 ALL ELECTRICAL/CONTROLS CONDUITS WITH BENDS MUST BE SWEEPING SO DEGRESS TO ALLOW FOR PULLING/FEEDING WIRES.
  - 4 THIS DRAWING IS REPRESENTATIVE OF ALL UTILITY OUTLETS. SITE SPECIFIC CONDITIONS AND MODEL TYPE WILL DETERMINE WHICH OUTLETS ARE ACTUALLY USED. REFERENCE SHEET WB-102 FOR A TYPICAL HYDRAULIC MODEL AND ELECTRIC MODEL CONDUIT LAYOUT.
  - 5 ANY UNUSED OUTLETS MUST BE SEALED OFF PRIOR TO PLACING CONCRETE.



CONCEPTUAL DRAWING

Property of SMIT. Do Not Copy or Distribute Without Express Written Permission of SMIT.

DATE: 07/27/2011	SCALE:	DATE:	DESCRIPTION:
DRAWN BY: JEE	CHECKED BY:	REV:	
SIZE: A35 D	DRAWING NUMBER: WB-101		
9' WIDE ACTIVE VEHICLE WEDGE BARRIER UTILITY LAYOUT			
SHEET ID WB-101		REV:	