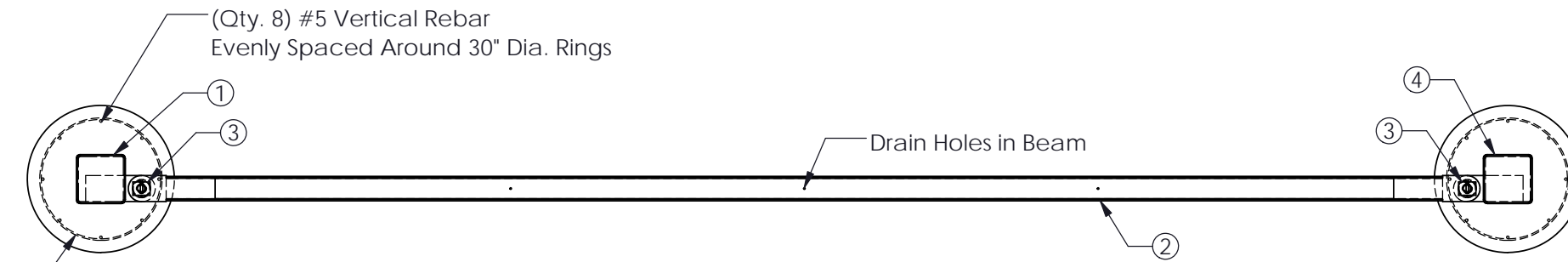


G-6331 M30 POST AND BEAM MIN RUN B.O.M.

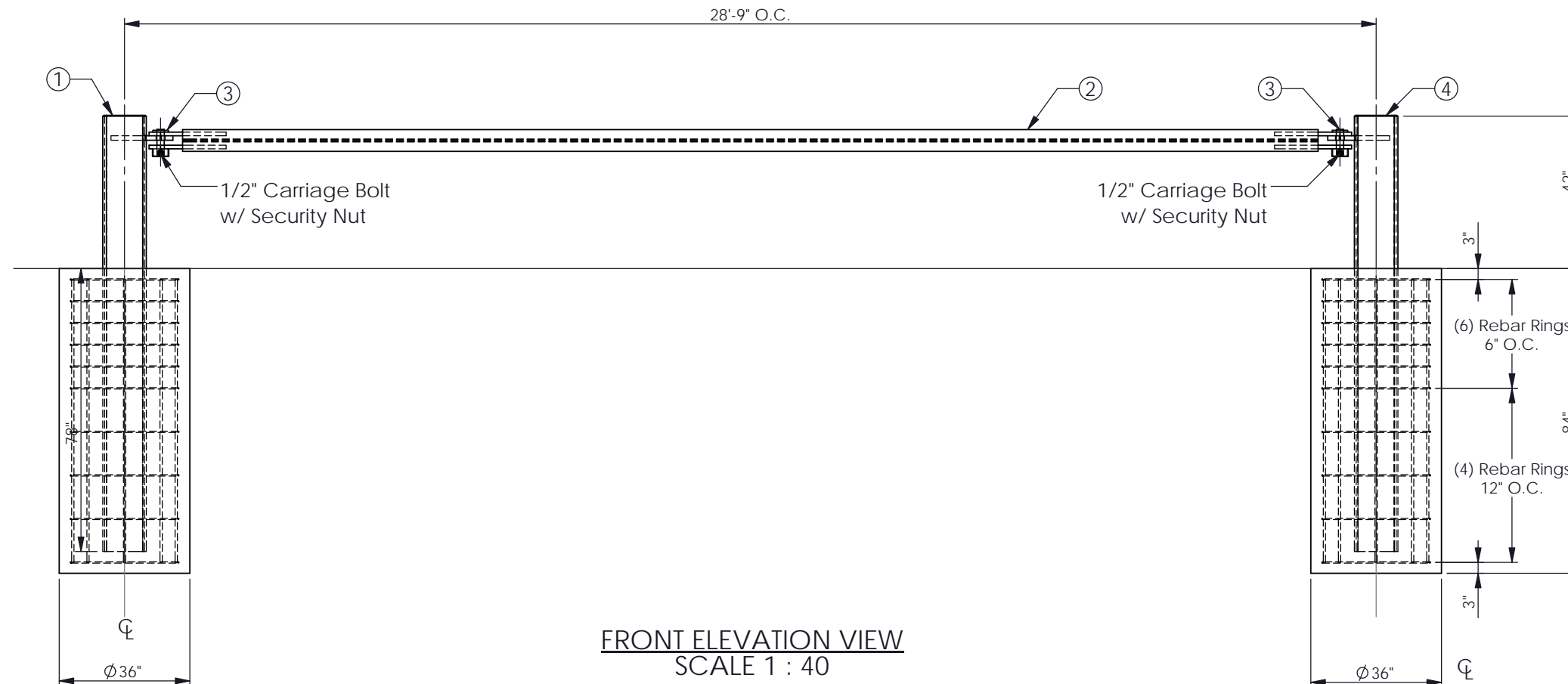
ITEM NO.	DESCRIPTION	QTY.
1	Left Hand End Post	1
2	W-Beam	1
3	Pivot Pin	2
4	Right Hand End Post	1

GENERAL NOTES

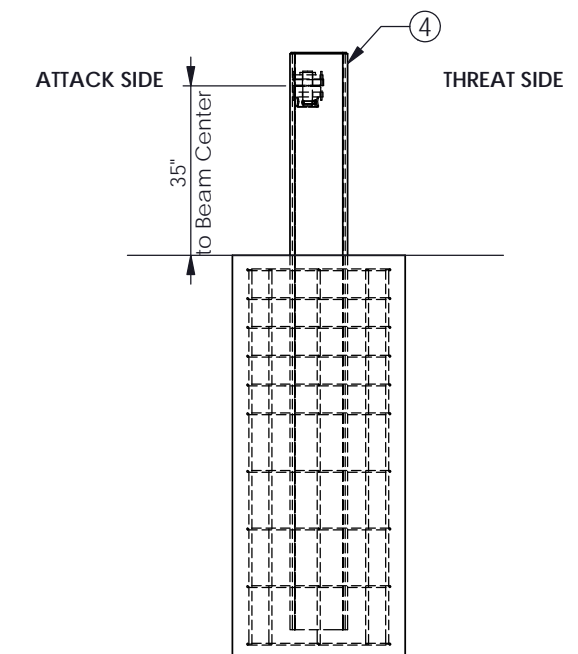
1. This drawing represents the minimum tested width M30 P1 Post and Beam system. System installations greater in width than shown must follow the system details shown on Gibraltar Drawing # 6331-SL01.
2. For additional information contact Gibraltar at 1-800-495-8957.
3. All concrete shall be per specification; minimum 3500PSI. With 3" clear cover for rebar. All foundations are reinforced with #3 and #5 rebar provided by others.
4. To ensure proper fit it is recommended that beams be pinned up to posts before concrete is poured.
5. Refer to the G-Force Post and Beam Installation Guide for details on corners and fence line direction changes.
6. Height from grade to beam center is 35" ± 3" for grade change between line posts. Beams can accommodate a grade change of 11 degrees at line post connections. Resulting in a maximum grade change of 22 degrees at Line posts.
7. Gibraltar will provide site specific submittals and layouts with part list for each individual project.



PLAN VIEW
SCALE 1 : 40



FRONT ELEVATION VIEW
SCALE 1 : 40



RIGHT SIDE ELEVATION VIEW
SCALE 1 : 40

PROPRIETARY AND CONFIDENTIAL THE INFORMATION CONTAINED IN THIS DRAWING IS THE SOLE PROPERTY OF GIBRALTAR. ANY REPRODUCTION IN PART OR AS A WHOLE WITHOUT THE WRITTEN PERMISSION OF GIBRALTAR IS PROHIBITED.				PRODUCT: G-6331 G-Force M30 P1 Post and Beam System		SHEET DESCRIPTION: Minimum Width System Layout	
REV #	DESCRIPTION:	DRAWN BY:	APPD BY:	DATE:	PROJECT: Standard		
1	Approved for distribution	JP	JH	09-12-18			
0	Issued for approval	EJ	JP	11-01-17	SCALE: 1:35 SHEET: 1 OF 1 DWG # 6331-SL03		

