

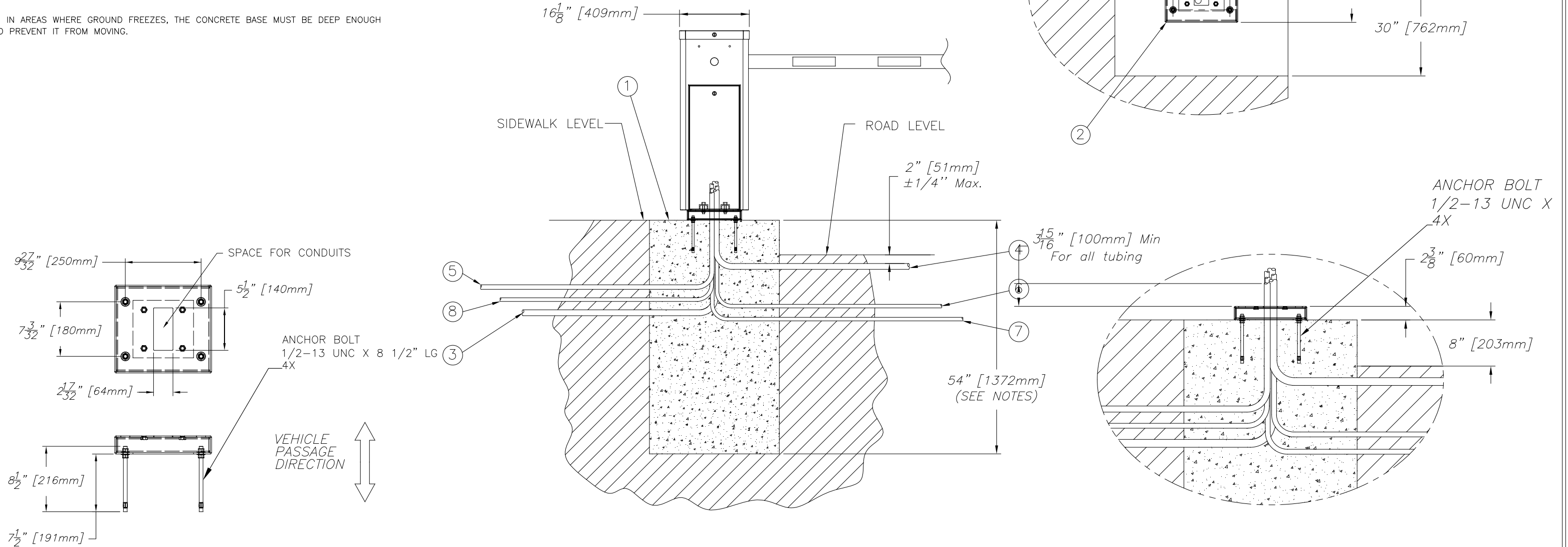
NOTES:

- ENSURE PROPER DRAINAGE OF SOIL AROUND THE NEW FOUNDATION. WATER SHALL NOT ACCUMULATE AROUND THE FOUNDATION
- CONCRETE CHARACTERISTICS
 - COMPRESSIVE STRENGTH AT 28 DAYS : 4350 psi [30MPa]
 - MAXIMUM AGGREGATE : $\phi 3/4"$ [$\phi 19\text{mm}$]
 - MAX WATER/CEMENT RATIO : 0.50
 - SLUMP : $3" \pm 1"$ [$76\text{mm} \pm 25\text{mm}$]
 - ENTRAINED AIR : 5 TO 8%P
- CHARACTERISTICS OF NON SHRINK CEMENT GROUT :
 - COMPRESSIVE STRENGTH AT 28 DAYS : 7252 psi [50 MPa]
 - ACCEPTED PRODUCT : SIKAGROUT 212 OR EQUIVALENT APPROVED BY THE OWNER ENGINEER
- IN AREAS WHERE GROUND FREEZES, THE CONCRETE BASE MUST BE DEEP ENOUGH TO PREVENT IT FROM MOVING.

DESCRIPTION

- CONCRETE BASE
- ANTI-CORROSION BASE OPTION MUST BE INSTALLED ON A REGULAR CONCRETE SURFACE.
- $\phi 1"$ CONDUIT TO THE GUARD HOUSE.
- $\phi 1"$ CONDUIT FOR DETECTING LOOP (If required 1 conduit per loop).
- $\phi 3/4"$ CONDUIT TO THE POWER SUPPLY CABINET, 120V AC, 15 AMPS MAX CIRCUIT. (Ref. : 3 wires, 14 ga).
- $\phi 1/2"$ CONDUIT TO ELECTROMAGNETIC TIP SUPPORT (If required).
- $\phi 1/2"$ CONDUIT FOR THE EXIT CONTROL POST (If required).
- $\phi 1/2"$ CONDUIT FOR THE ENTRANCE CONTROL POST (If required).

BEFORE THE INSTALLATION OF THE BARRIER, THE WIRE MUST BE 4 FEET LONG FROM THE TOP OF THE CONCRETE BASE.



INSTALLATION ANTI-CORROSION BASE OPTION DETAILS

KIT ITEM NUMBER : E/BLOP/116

WARNING

- RESPECT ALL LAWS AND STANDARDS APPLICABLE WHERE THE BARRIER WILL BE INSTALLED.
- READ THE INSTALLATION AND USER MANUAL BEFORE INSTALLING AND USING THE BARRIER.
- THE BARRIER MUST BE INSTALLED BY A TRAINED OR CERTIFIED WORKER.

<p>MATÉRIAU/MATERIAL -</p> <p>TRAITEMENT/TREATMENT -</p> <p>FINI/FINISH -</p>				<p>LES DIMENSIONS SONT EN POUCES / DIMENSIONS ARE IN INCHES</p> <p>TOLERANCES</p> <table border="1"> <tr><td>.XXX</td><td>± .005</td></tr> <tr><td>.XX</td><td>± .010</td></tr> <tr><td>.X</td><td>± .015</td></tr> <tr><td>FRAC.</td><td>± 1/32</td></tr> <tr><td>ANGLES</td><td>± 1/2°</td></tr> </table> <p>SAUF SI INDIQUÉS UNLESS OTHERWISE NOTED</p>				.XXX	± .005	.XX	± .010	.X	± .015	FRAC.	± 1/32	ANGLES	± 1/2°	<p>EBARBER & ENLEVER LES ARÊTES VIVES. DIM SELON ASME Y14.5 1994. NE PAS MESURER SUR LE DESSIN</p> <p>BREAK ALL SHARP EDGES AND CORNERS. ALL DIM PER ASME Y14.5 1994. DO NOT SCALE DRAWING</p>				<p>ASIAUTOMATIC SYSTEMS</p> <p>FICHER / FILENAME NAM-BL229-CONDUITS-02-IN-EN.DWG</p>			
.XXX	± .005																								
.XX	± .010																								
.X	± .015																								
FRAC.	± 1/32																								
ANGLES	± 1/2°																								
<p>NB./App.</p> <table border="1"> <tr><td></td><td>POIDS/WEIGHT</td><td>SURFACE</td></tr> <tr><td>-</td><td>-</td><td>-</td></tr> </table>					POIDS/WEIGHT	SURFACE	-	-	-	<p>LES INFORMATIONS CONTENUES SUR LES DESSINS DE ASA Inc. SONT CONFIDENTIELLES ET SONT LA PROPRIÉTÉ DE ASA Inc., TOUTES REPRODUCTIONS, DISTRIBUTIONS OU UTILISATIONS SONT INTERDITES SANS LA PERMISSION DE ASA Inc.</p>				<p>TITRE STANDARD CONDUIT & ANTI-CORROSION BASE LAYOUT BL229</p>											
	POIDS/WEIGHT	SURFACE																							
-	-	-																							
<p>INFORMATION DISCLOSED HERE IS CONFIDENTIAL AND IS THE PROPERTY OF ASA Inc., ANY REPRODUCTION, DISTRIBUTION OR USE IS PROHIBITED WITHOUT A WRITTEN CONSENT BY ASA Inc.</p>				<p>ÉCHELLE/SCALE N/A</p>				<p>FORMAT/SIZE B</p>																	
<p>REV</p> <table border="1"> <tr><td></td><td>DATE</td><td>MODIFICATIONS/CHANGES</td><td>PAR/BY</td></tr> <tr><td>-</td><td>-</td><td>-</td><td>-</td></tr> </table> <p>REVISIONS</p>					DATE	MODIFICATIONS/CHANGES	PAR/BY	-	-	-	-	<p>DATE 2017/11/27</p>				<p>FEUILLE/SHEET 1</p>									
	DATE	MODIFICATIONS/CHANGES	PAR/BY																						
-	-	-	-																						
<p>DESSINÉ PAR DRAWN BY OHL</p>				<p>VÉRIFIÉ PAR CHECKED BY MTO</p>				<p>NO. DE DESSIN/DWG. NO. NAM-BL229-CONDUITS-02-IN-EN A</p>																	