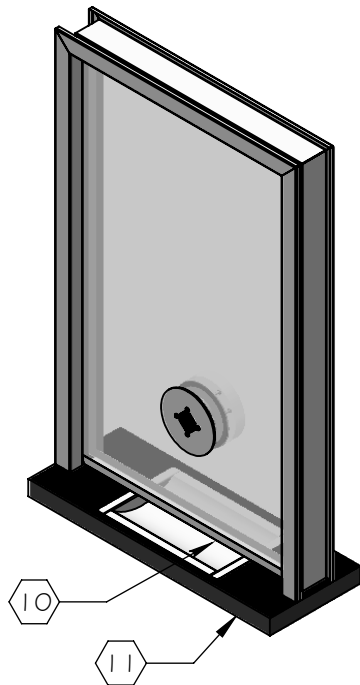
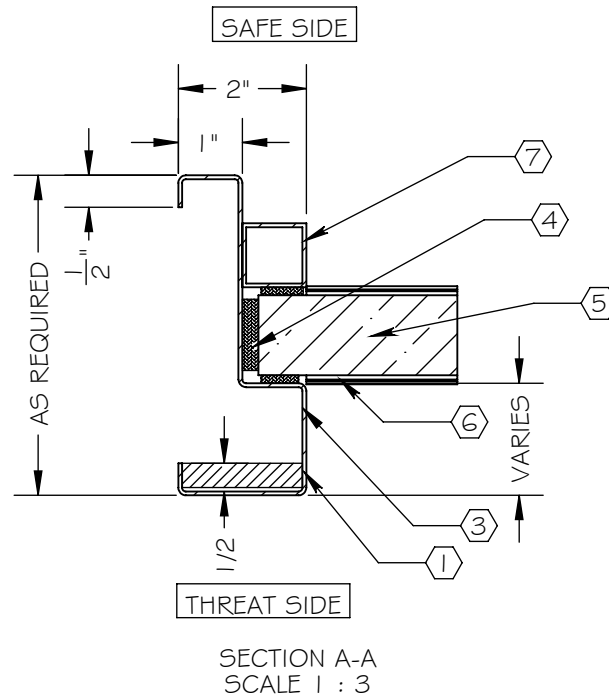
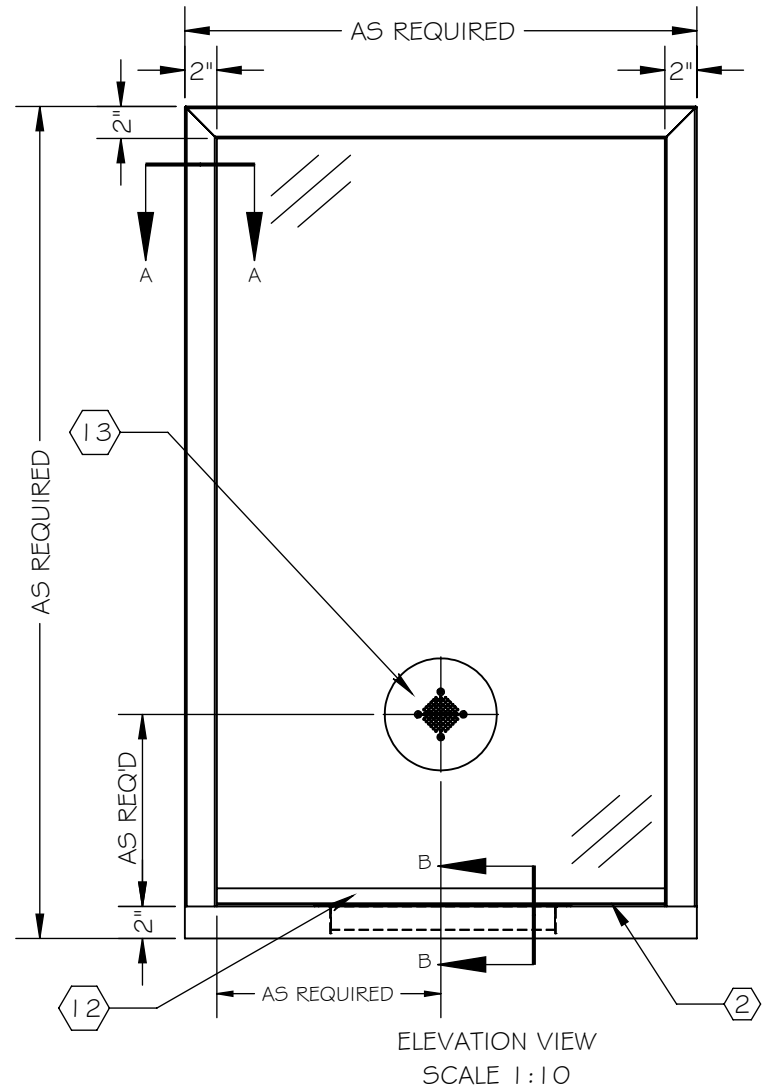
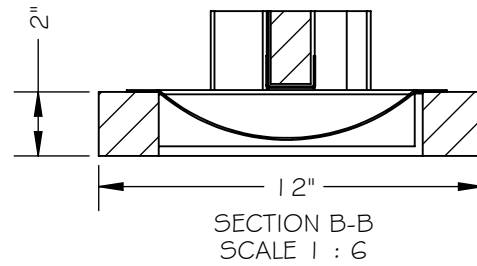


NOTES:

- ① ARMORTEX® BULLET RESISTANT ARMOR
- ② STAINLESS STEEL GLAZING CAPS
- ③ HOLLOW METAL FRAME
- ④ NEOPRENE SETTING BLOCKS
- ⑤ ARMORTEX® BULLET RESISTANT GLAZING
- ⑥ GLAZING TAPE
- ⑦ REMOVABLE STOP 1" X 1"
- ⑧ ANCHOR HOLES AS REQUIRED (NOT SHOWN)
- ⑨ ANCHORS AS REQUIRED (BY OTHERS) (NOT SHOWN)
- ⑩ STAINLESS STEEL DEAL TRAY
- ⑪ HIGH PRESSURE BLACK LAMINATED PLASTIC SHELF
- (STAINLESS STEEL OPTIONAL)
- ⑫ STAINLESS STEEL CAP
- ⑬ SPEAKER



SCALE: AS NOTED	TITLE: TRANSACTION WINDOW HM SPEAKER	UNLESS OTHERWISE SPECIFIED: DIMENSIONS ARE IN INCHES TOLERANCES: FRACTIONAL: ±1/16" ANGULAR: ±1° TWO PLACE DECIMAL ±.01 THREE PLACE DECIMAL ±.005
DATE: 06-10-2015	MODEL: WI-TW-HM-SP	ARMORTEX® BULLET • BLAST • FORCED ENTRY - PROTECTION PRODUCTS 5926 CORRIDOR PKWY SCHERTZ, TX 78154 TEL: 210-661-8306 800-880-8306 FAX: 210-661-8308 www.armortex.com
DRAWN BY: M. FREEMAN	SHEET NUMBER: 1 OF 1	